



# CACNG2 Polyclonal Antibody

<b>Catalog No</b>	YP-Ab-01217
<b>Isotype</b>	IgG
<b>Reactivity</b>	Human;Mouse;Rat
<b>Applications</b>	WB;IHC;IF
<b>Gene Name</b>	CACNG2
<b>Protein Name</b>	Voltage-dependent calcium channel gamma-2 subunit
<b>Immunogen</b>	Synthetic Peptide of CACNG2 AA range: 58-108
<b>Specificity</b>	The antibody detects endogenous CACNG2 protein.
<b>Formulation</b>	PBS, pH 7.4, containing 0.5%BSA, 0.02% sodium azide as Preservative and 50% Glycerol.
<b>Source</b>	Polyclonal, Rabbit,IgG
<b>Purification</b>	The antibody was affinity-purified from rabbit antiserum by affinity-chromatography using epitope-specific immunogen.
<b>Dilution</b>	WB: 1:1000-2000 IHC: 1:200-500. IF 1:50-200
<b>Concentration</b>	1 mg/ml
<b>Purity</b>	≥90%
<b>Storage Stability</b>	-20°C/1 year
<b>Synonyms</b>	Voltage-dependent calcium channel gamma-2 subunit; Neuronal voltage-gated calcium channel gamma-2 subunit; Transmembrane AMPAR regulatory protein gamma-2; TARP gamma-2
<b>Observed Band</b>	36kD
<b>Cell Pathway</b>	Membrane; Multi-pass membrane protein. Cell junction, synapse, synaptosome .
<b>Tissue Specificity</b>	Brain.
<b>Function</b>	function:Thought to stabilize the calcium channel in an inactivated (closed) state.,PTM:Phosphorylation of Thr-321 impairs interaction with DLG1 and DLG4.,similarity:Belongs to the PMP-22/EMP/MP20 family. CACNG subfamily.,subunit:The L-type calcium channel is composed of five subunits: alpha-1, alpha-2/delta, beta and gamma. Interacts with the PDZ domains of DLG4/PSD-95 and DLG1/SAP97. May interact with GOPC.,tissue specificity:Brain.,
<b>Background</b>	calcium voltage-gated channel auxiliary subunit gamma 2(CACNG2) Homo sapiens The protein encoded by this gene is a type I transmembrane AMPA receptor regulatory protein (TARP). TARPs regulate both trafficking and channel gating of the AMPA receptors. This gene is part of a functionally diverse eight-member protein subfamily of the PMP-22/EMP/MP20 family. This gene is a



susceptibility locus for schizophrenia. [provided by RefSeq, Dec 2010],

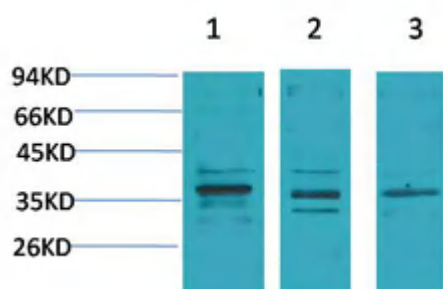
**matters needing attention**

Avoid repeated freezing and thawing!

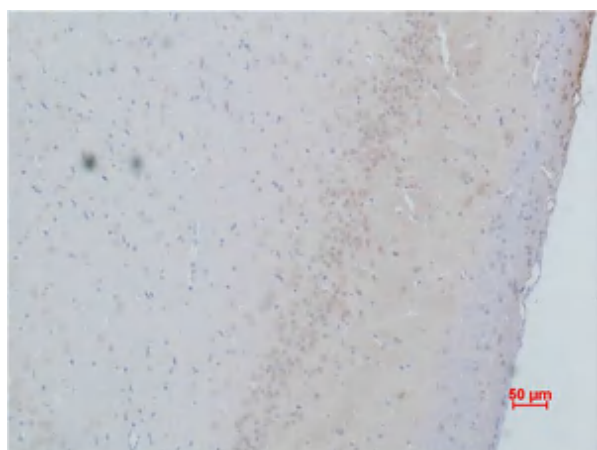
**Usage suggestions**

This product can be used in immunological reaction related experiments. For more information, please consult technical personnel.

**Products Images**



Western blot analysis of 1) Human Brain Tissue, 2) Mouse Brain Tissue, 3) Rat Brain Tissue using CACNG2 Polyclonal Antibody. Secondary antibody(catalog#:RS0002) was diluted at 1:20000



Immunohistochemical analysis of paraffin-embedded Rat Brain Tissue using CACNG2 Polyclonal Antibody.